

## NLRP9 Polyclonal Antibody

### Purified Rabbit Polyclonal Antibody (Pab)

Catalog # AP58536

### Specification

### NLRP9 Polyclonal Antibody - Product Information

Application	WB, IHC-P, IHC-F, IF, E
Primary Accession	<a href="#">Q7RTR0</a>
Reactivity	Rat
Host	Rabbit
Clonality	Polyclonal
Calculated MW	109 KDa
Physical State	Liquid
Immunogen	KLH conjugated synthetic peptide derived from human NLRP9
Epitope Specificity	701-800/991
Isotype	IgG
<b>Purity</b>	
affinity purified by Protein A	
Buffer	0.01M TBS (pH7.4) with 1% BSA, 0.02% Proclin300 and 50% Glycerol.
SUBCELLULAR LOCATION	Cytoplasm.
SIMILARITY	Belongs to the NLRP family. Contains 1 DAPIN domain. Contains 6 LRR (leucine-rich) repeats. Contains 1 NACHT domain.
Important Note	This product as supplied is intended for research use only, not for use in human, therapeutic or diagnostic applications.

### Background Descriptions

The protein encoded by this gene belongs to the NALP protein family. Members of the NALP protein family typically contain a NACHT domain, a NACHT-associated domain (NAD), a C-terminal leucine-rich repeat (LRR) region, and an N-terminal pyrin domain (PYD). This protein may play a regulatory role in the innate immune system as similar family members belong to the signal-induced multiprotein complex, the inflammasome, that activates the pro-inflammatory caspases, caspase-1 and caspase-5. [provided by RefSeq, Jul 2008].

### NLRP9 Polyclonal Antibody - Additional Information

**Gene ID** 338321

### Other Names

NACHT, LRR and PYD domains-containing protein 9, Nucleotide-binding oligomerization domain protein 6, PYRIN and NACHT-containing protein 12, NLRP9, NALP9, NOD6, PAN12

### Dilution

<span class = "dilution\_WB">WB~~1:1000</span><br \><span class = "dilution\_IHC-P">IHC-P~~N/A</span><br \><span class =

0.01M TBS(pH7.4), 0.09% (W/V) sodium azide and 50% Glycerol

Store at -20 °C for one year. Avoid repeated freeze/thaw cycles. When reconstituted in sterile pH 7.4 0.01M PBS or diluent of antibody the antibody is stable for at least two weeks at 2-4 °C.

**Name** NLRP9

**Synonyms** NALP9, NOD6, PAN12

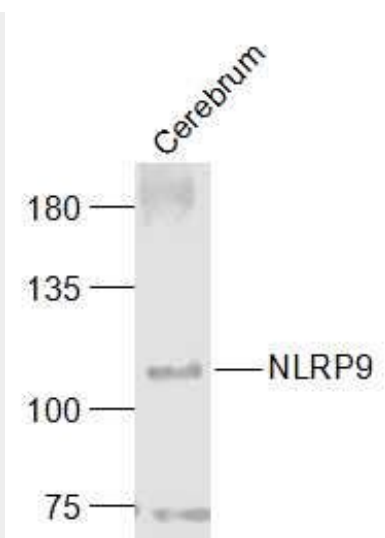
As the sensor component of the NLRP9 inflammasome, plays a crucial role in innate immunity and inflammation. In response to pathogens, including rotavirus, initiates the formation of the inflammasome polymeric complex, made of NLRP9, PYCARD and CASP1. Recruitment of proCASP1 to the inflammasome promotes its activation and CASP1-catalyzed IL1 $\beta$  and IL18 maturation and release in the extracellular milieu. The active cytokines stimulate inflammatory responses. Inflammasomes can also induce pyroptosis, an inflammatory form of programmed cell death. NLRP9 inflammasome activation may be initiated by DHX9 interaction with viral double-stranded RNA (dsRNA), preferentially to short dsRNA segments.

Cytoplasm {ECO:0000250|UniProtKB:Q66X22}. Inflammasome

Expressed in ileum intestinal epithelial cells. Not detected in peripheral blood mononuclear cells (PubMed:28636595) Expressed in cerebral endothelial cells and, at much lower levels, in brain pericytes (PubMed:28432035).

Provided below are standard protocols that you may find useful for product applications.

- [Western Blot](#)
- [Blocking Peptides](#)
- [Dot Blot](#)
- [Immunohistochemistry](#)
- [Immunofluorescence](#)
- [Immunoprecipitation](#)
- [Flow Cytometry](#)
- [Cell Culture](#)



**Sample:**

Cerebrum (Mouse) Lysate at 40 ug

Primary: Anti-NLRP9 (bs-6867R) at 1/1000 dilution

Secondary: IRDye800CW Goat Anti-Rabbit IgG at 1/20000 dilution

Predicted band size: 109 kD

Observed band size: 109 kD